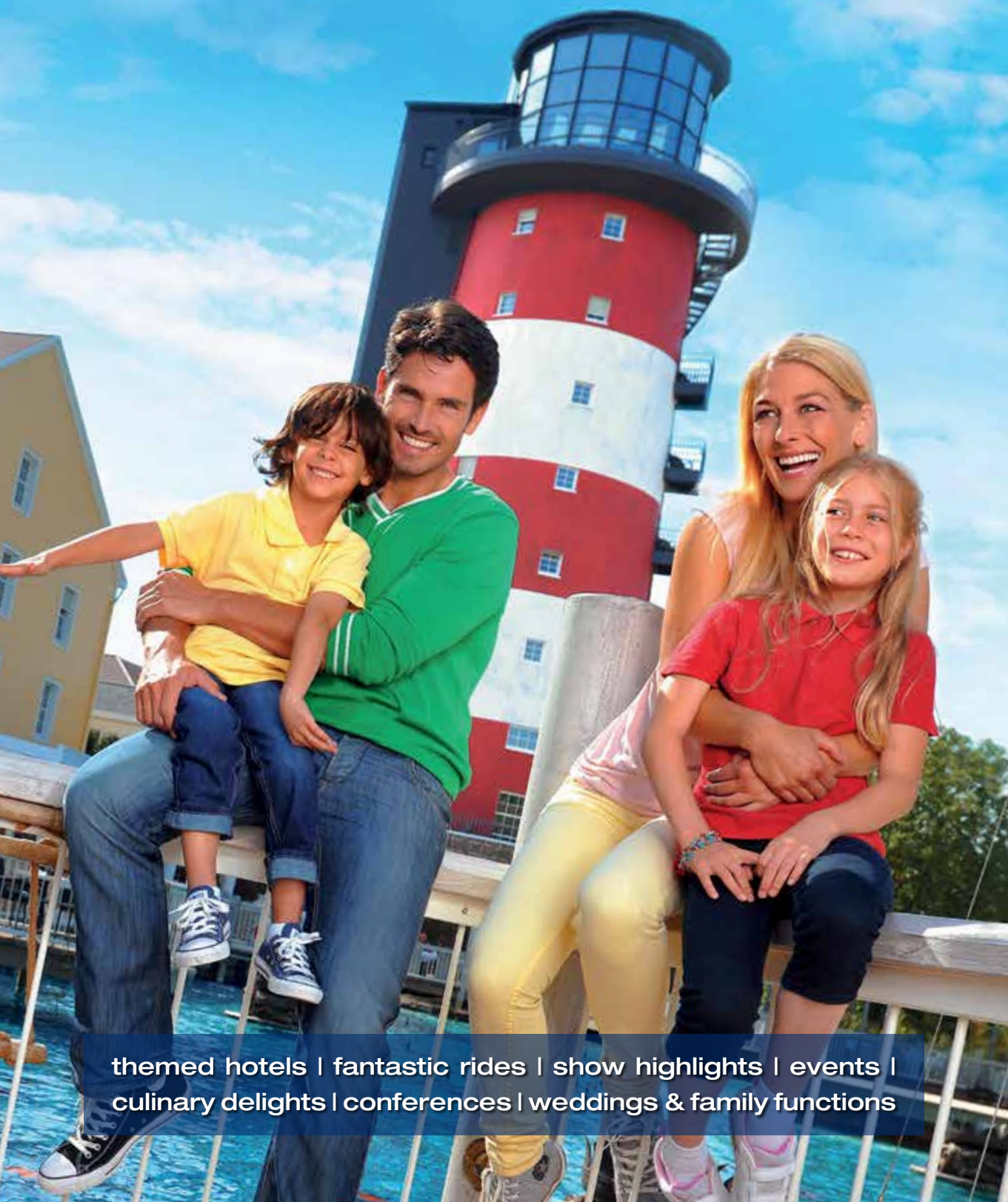


EUROPA PARK®

THEME PARK & RESORT

Prices 2013



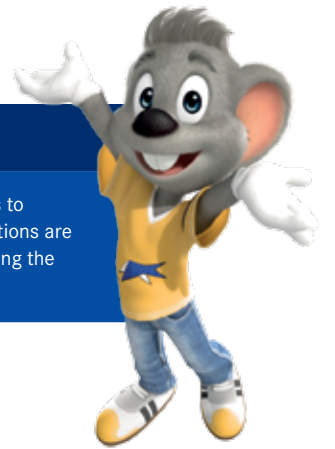
themed hotels | fantastic rides | show highlights | events |
culinary delights | conferences | weddings & family functions

Contents

P. 3	Opening times
P. 3	Payments and prices
P. 3	General abbreviations: Europa-Park Resort
P. 4	So easy to book!
P. 6	Europa-Park admission prices
P. 7	Europa-Park annual season ticket
P. 8	4-star superior themed hotel "Bell Rock"
P. 10	4-star superior themed hotel "Santa Isabel"
P. 12	4-star superior themed hotel "Colosseo"
P. 14	4-star castle hotel "Castillo Alcazar"
P. 16	4-star themed hotel "El Andaluz"
P. 18	Europe Round Trip / Hopping Pass for the Europa-Park Resort
P. 19	Group prices "Bell Rock" and "Santa Isabel"
P. 20	Group prices "Colosseo"
P. 21	Group prices "Castillo Alcazar" and "El Andaluz"
P. 22	Camp Resort
P. 23	Camping Europa-Park / Log-cabin Winter 2013/2014
P. 24	Feel Good Weeks from the 3 rd – 22 nd Nov 2013 and 06 th Jan until start of the season 2014
P. 26	Feel Good Weeks Packages
P. 27	Wellness & Spa "Bell Rock"
P. 28	Wellness & Spa "Colosseo"
P. 29	Wellness & Spa "Santa Isabel"
P. 30	Hotel offers for our guests 60+ - summer
P. 31	Special offers for our guests aged 60+ - summer
P. 32	Group offers summer 2013
P. 33	Evening events all year round
P. 34	New Years Eve Offer 2013/2014
P. 36	Event calendar 2013
P. 37	Benefits for hotel guests
P. 38	Amenities & services at the hotels and Camp Resort
P. 40	Getting to Europa-Park
P. 42	Distance table
P. 43	Gift Card "Emotions"
P. 44	School holidays calendar 2013/2014
P. 45	Public holidays 2013/2014

SPECIAL TIP: VIP admission

There is a special VIP entrance for guests of the Europa-Park hotels with direct access to Europa-Park (valid admission ticket required). During the summer season some attractions are open exclusively for hotel guests 30 minutes prior to the official park opening and during the winter season 60 minutes prior to the official park opening.



Opening times

Opening hours summer 2013

Europa-Park is open from the **23rd March until 3rd November**, daily from 9 am to 6 pm. Extended opening times in the summer months. *Subject to change!*

Opening hours winter 2013/2014

Europa-Park is open from **23th November 2013 until the 6th January 2014**, daily from 11 am to 7 pm (except 24th/25th December 2013). *Subject to change!*

Payments and prices

Cash points	Cash points can be found outside at the information point at the main entrance, at the information point on the lake and at the entrance to the Spanish Arena. Additionally you have cash machines available in the hotel lobbies "Bell Rock", "Colosseo" and "Santa Isabel".
Change	Currencies can be exchanged at all three information points in the park (daily quoted price).
Shopping	Cashless payment is possible in all shops.
Catering	Most restaurants and snack bars accept payment by debit card, credit card as well as our Europa-Park "Emotions" gift card.
Europa-Park hotels	The hotel reception desks accept in addition to cash the usual credit cards (American Express, Diners Club, MasterCard, Visa), debit cards as well as our Europa-Park "Emotions" gift card as payment methods. Hotel guests may also exchange the following currencies at the reception desks at the daily rate: CAD, CHF, DKK, GBP, NOK, SEK, USD.

Prices are gross, including statutory VAT. Prices are non-commissionable. Update: January 2013. Our general terms and conditions can be found on www.europapark.de.

General abbreviations: Europa-Park Resort

Europa-Park Resort

CAD	Canadian dollar	p.p.	Per person
CHF	Swiss franc	SEK	Swedish krona
DKK	Danish krone	USD	US Dollar
GBP	British pound	O	Overnight stay
NOK	Norwegian krone	B&B	Bed & breakfast

Let's mix ,n' match ...

The versatile accommodation range at the Europa-Park hotels is every bit as individual as the guests who stay there. It includes 4-star themed hotels and the Camp Resort with original tepees, rustic log-cabin rooms and covered wagons. Here is a guide to help you calculate your own individual all-in price for an unforgettable short break at the Europa-Park hotels.

6 steps to your booking

- 1. Where would you like to have your dream accommodation?**
Select your hotel or your accommodation in the Camp Resort.
- 2. When would you like to visit Europa-Park?**
Germany's biggest theme park is worth visiting both in summer and in winter. Even when Europa-Park is closed, you can still enjoy the Feel Good Weeks (p. 24).
Tip: Take a look at our vacation and holiday calendar (p. 44/45), and you'll find the right time to travel.
- 3. How long would you like to stay at Europa-Park?**
Take your pick between overnight stay plus breakfast and our all-in package deals (including admission to Europa-Park). We recommend our 2-Day package, which will allow you to relax and enjoy Europa-Park and the hotels amenities.
- 4. Choose your room category**
The room category is defined by the number of paying visitor over the age of 4 staying together in one room. Besides the standard family rooms, there are suites available in the themed hotels. Which will make your stay even more exciting by adding further comfort & luxury.
- 5. Calculate your price**
Guests of 12 years and over are classed as adults. Children between 4 and 11 years pay the children's price.

4-star superior themed hotel "Colosseo"

1. Individual guests

Adults (12+)	2. Summer season 2013 23.03. - 03.11.2013			Winter season 2013/2014 23.11.2013 - 06.01.2014 (except 24/25.12.13)
	B&B	3. 2-Day package 1 x B&B + 2 x admission	3-Day package 2 x B&B + 3 x admission	B&B
5/6-bed room	€ 62.50	€ 135.50	€ 219.00	€ 62.50
4-bed room	€ 70.50	€ 143.50	€ 235.00	€ 70.50
3-bed room	€ 78.00	€ 151.00	€ 250.00	€ 78.00
Double room	€ 97.00	€ 170.00	€ 288.00	€ 97.00
Single room	€ 149.50	€ 222.50	€ 393.00	€ 149.50

Children (4 - 11 years)	Summer season 2013 23.03. - 03.11.2013			Winter season 2013/2014 23.11.2013 - 06.01.2014 (except 24/25.12.13)
	B&B	2-Day package 1 x B&B + 2 x admission	3-Day package 2 x B&B + 3 x admission	B&B
5/6-bed room	€ 41.00	€ 104.50	€ 163.00	€ 41.00
4-bed room	€ 46.50	€ 110.00	€ 174.00	€ 46.50
3-bed room	€ 55.00	€ 118.50	€ 191.00	€ 55.00
Double room	€ 74.00	€ 137.50	€ 229.00	€ 74.00

5. Sample calculation:

2 adults + 2 children in a 4-bed room at the "Colosseo" booking the 2-Day package for the summer season 2013.

Costs: 2 x € 143.50 + 2 x € 110.00 = € 507.00

6. ... and book your dream holiday!



Admission tickets

Online: www.europapark.de
E-mail: gaesteservice@europapark.de
Phone: +49 7822 77-6697
Fax: +49 7822 860-5779

Bookings Europa-Park Hotels

Online: www.europapark.de/reservation
E-mail: resort-international@europapark.de
Phone: +49 7822 860-5679
Fax: +49 7822 860-5545

Bookings Camp Resort

Tepee tents/log-cabins/covered wagons/Honeymoon suite
Online: www.europapark.de/reservation
E-mail: camp-resort@europapark.de
Phone: +49 7822 860-5566
Fax: +49 7822 860-5568

Wellness & Spa "Bell Rock"

Online: www.europapark.de/wellness-bellrock
E-mail: wellness-bellrock@europapark.de
Phone: +49 7822 860-5930

Wellness & Spa "Colosseo"

Online: www.europapark.de/wellness-colosseo
E-mail: wellness-colosseo@europapark.de
Phone: +49 7822 860-5730
Fax: +49 7822 860-5766

Wellness & Spa "Santa Isabel"

Online: www.europapark.de/wellness-santaisabel
E-mail: wellness-santaisabel@europapark.de
Phone: +49 7822 860-5530
Fax: +49 7822 860-5531

Evening events

Online: www.confertainment.de
E-mail: confertainment@europapark.de
Phone: +49 7822 77-14400

Events

Online: www.europapark.de/events
E-mail: info@europapark.de
Phone: +49 7822 77-6697

You can also book direct online on our website or via our certified tour operators:

Worldwide:



Phone: +44 20 3564 3904
www.expedia.co.uk



www.booking.com

Netherlands:



Phone: +31 / 900 84 82
www.oad.nl



Phone: +31 / 900 8847
www.hollandinternational.nl

Belgium:



www.jetair.be

United Arab Emirates:



Phone (UAE Only): 8005252
www.emiratesholidays.com

Europa-Park admission prices

Summer prices 2013

Children (up to and including 3 years)	free
Children (4-11 years)	€ 34.00
Children on their birthdays (up to 12 years of age, presenting ID or birth certificate)	free
Adults	€ 39.00
Guests aged 60+	€ 34.00
Guests with disabilities	€ 34.00
Groups* (valid only for 20 paying visitors or more)	€ 33.00
School classes**	€ 23.50
Parking lot price per day and car	€ 5.00

2-day tickets

(Valid for 7 days after first visit. The 2-day ticket is non-transferable.)

2-day ticket: children (4-11 years)	€ 63.50
2-day ticket: adults	€ 73.00
2-day ticket: guests aged 60+	€ 63.50
2-day ticket: guests with disabilities	€ 63.50

Vouchers and tickets can conveniently be downloaded online via www.europapark.de/vouchers and printed instantly or send to your home.



T I P S

Happy Birthday Children

Free admission on your birthday: Euromaus offers children up to (and including) 12 years of age a day's free admission to Europa-Park! Valid on birthdays only. Don't forget to bring an ID card or birth certificate.

Europa-Park Packages

Book your mini-break at Europa-Park as a convenient "2-Day-" or "3-Day-package". That way, your visit to the park will get cheaper each day.

blue fire Megacoaster powered by GAZPROM



*Group prices only apply if the bus driver or tour guide buys the tickets for the entire group. The address of the tour agency is required to buy the tickets at the bus counter. Only with advance reservation by fax at: +49 7822 77-15605.

**The school class price only applies if a certificate from the school is handed in at the bus ticket counter. Advance reservation by fax at: +49 7822 77-15605. This price does not apply to evening classes, vocational schools, part-time or further-training schools, to Sundays and public holidays, or further training schools. Further it doesn't apply on Sundays and public holidays, or during German school holidays. Free admission for one accompanying teacher per 10 children.

Europa-Park annual season ticket

For everybody who wants to discover Europa-Park all year round, here is a great offer: the **annual season ticket**.

Annual season ticket	2013
Children (up to and including 3 years)	free
Children (4 - 11 years)	€ 135.00
Adults	€ 158.00
Guests aged 60+	€ 141.00
Guests with disabilities	€ 135.00

*Prices are valid until 6th January 2014.

- The annual season ticket is valid for one year starting on the date of issue. Please note the Europa-Park opening times.
- The annual season ticket is non-transferable and does not include parking charges. If you are interested in parking, then have a look at our special parking offer: our "Pay once, park for a year" parking pass!

	2013
Price per parking pass (18 years or above)	€ 20.00
Price of second pass for your partner	€ 10.00

*Prices are valid until 6th January 2014.

- The validity of the parking pass is tied to the annual season ticket (1 year) and ends once the ticket expires. The parking pass is **non-transferable**.

Advantages for annual season ticket holders:

- You receive regular information about new attractions and events at Europa-Park.
- You regularly receive vouchers or discounts; for example for shopping articles, wellness offers, catering and much more.
- Reduced admission prices for numerous Europa-Park events.
- Purchase of a parking pass also enables you to park your caravan/trailer free of charge at our Europa-Park camp site during the day.
- With your annual season ticket you can also visit the following leisure park free of charge once per year: PhantasiaLand (D), Efteling (NL), Liseberg (S), Port Aventura (ES) and Isla Magica (ES).
- If you renew your annual ticket within 1 month of its expiration you receive a € 5.00 gift card "Emotions" as a loyalty bonus.
- If you recruit a new annual season ticket holder, you'll receive a € 5.00 gift card "Emotions" as a token of our appreciation.

The annual season tickets as well as the parking passes are available at the information office "Information am Turm". We kindly ask you to contact one of the cashiers 1 to 4 at the main entrance to obtain your voucher for the season ticket or parking pass. This voucher will give you access to Europa-Park once so that you are able to pick up your personal Europa-Park annual season ticket from the information office "Information am Turm"!

Would you like to give away an annual season ticket as a gift? Then please order online at www.europapark.de/vouchers or call +49 7822 77-6688 to get a voucher!

Further information and current offers for annual season ticket holders are available at www.europapark.de/annual-ticket.

4-star superior themed hotel "Bell Rock"

Individual guests

Adults (12+)	Summer season 2013 23.03. – 03.11.2013			Winter season 2013/2014 23.11.2013 – 06.01.2014 (except 24/25.12.13)
	B&B	2-Day package 1 x B&B + 2 x admission	3-Day package 2 x B&B + 3 x admission	B&B
5/6-bed room	€ 66.00	€ 139.00	€ 226.00	€ 66.00
4-bed room	€ 74.00	€ 147.00	€ 242.00	€ 74.00
3-bed room	€ 81.50	€ 154.50	€ 257.00	€ 81.50
Double room	€ 101.50	€ 174.50	€ 297.00	€ 101.50
Single room	€ 158.50	€ 231.50	€ 411.00	€ 158.50

Children (4 – 11 years)	Summer season 2013 23.03. – 03.11.2013			Winter season 2013/2014 23.11.2013 – 06.01.2014 (except 24/25.12.13)
	B&B	2-Day package 1 x B&B + 2 x admission	3-Day package 2 x B&B + 3 x admission	B&B
5/6-bed room	€ 43.50	€ 107.00	€ 168.00	€ 43.50
4-bed room	€ 49.00	€ 112.50	€ 179.00	€ 49.00
3-bed room	€ 57.50	€ 121.00	€ 196.00	€ 57.50
Double room	€ 77.50	€ 141.00	€ 236.00	€ 77.50

All prices p.p.

Our reservation suggestion:

- **"Comfort room"** (max. 6 people) with balcony or terrace: **€ 75.00 extra charge per room/night** on the above mentioned prices!
- **"Deluxe room"** (max. 4 people) with separate children's area, iHome radio alarm-clock and charger station for iPhone, iPod & iPad: **€ 95.00 extra charge per room/night** on the above mentioned prices!

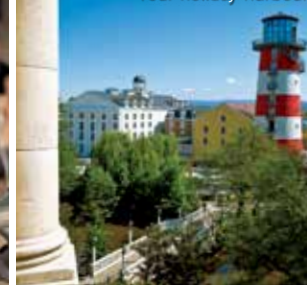
- The price category is defined by the number of paying visitors over 4 years of age.
- The price reduction for children in a multi-bed room assumes the presence of at least one adult.
- In the case of a multi-bed standard room, accommodation is in a common sleeping room. There is no entitlement to separate sleeping quarters.
- Children up to age 3 sleep in their parents' bed free of charge, but max. one child in the parental bed. Cots available on inquiry (€ 6.00/day). The price of a separate bed for children under 4 years is € 15.00/day.
- In the themed hotel "Bell Rock", all rooms and suites are air-conditioned and include a safe.



Fitness Club "Boston Red Sox"



Your holiday harbour



Restaurant "Captain's Finest"



Family room

4-star superior themed hotel "Bell Rock"

Individual guests

Suites	Characteristics	Summer season 2013 23.03. – 03.11.2013	Winter season 2013/2014 23.11.2013 – 06.01.2014 (except 24/25.12.13)
		Extra charge per room/night on the standard room prices	Extra charge per room/night on the standard room prices
Themed suite (max. 4 people) 1 bedroom, 1 bunk bed in the living room area	Air-conditioning, up to 2 flat screen TV's, safe, minibar, coffee maker, iHome radio alarm clock as well as a charging station for iPhone, iPod & iPad	€ 200.00	€ 200.00
Penthouse suite (max. 6 people) 2 bedrooms with separate bathrooms, 1 bunk bed in the living room area	Air-conditioning, bathtub, 3 flat screen TV's, safe, minibar, coffee maker, iHome radio alarm clock as well as a charging station for iPhone, iPod & iPad	€ 300.00	€ 300.00
Presidential suite* (max. 6 people) 2 bedrooms, 1 bunk bed in the living room area, on 2 floors, 2 bathrooms	Air-conditioning, bathtub, 2 flat screen TV's, safe, minibar, coffee maker, iHome radio alarm clock as well as a charging station for iPhone, iPod & iPad	€ 300.00	€ 300.00

Suites in the lighthouse**

Junior suite Abraham Lincoln on the 7 th floor (max. 4 people) 1 double bedroom, 1 bunk bed in the children's room	Air-conditioning, balcony, 1 flat screen TV, safe, minibar, coffee maker, tea making facilities, iHome radio alarm-clock and charger for iPhone, iPod & iPad	€ 350.00	€ 350.00
Lighthouse suite (max. 4 people) 1 double bedroom, 1 bunk bed in the children's room	Air-conditioning, balcony, 1 flat screen TV, safe, minibar, coffee maker, tea making facilities, iHome radio alarm clock as well as a charging station for iPhone, iPod & iPad	€ 350.00	€ 350.00
Lighthouse suite "Ahoi Heimat" by Stefan Strumbel (max. 4 people) 1 double bedroom, 1 bunk bed	Air-conditioning, balcony, 1 flat screen TV, safe, minibar, coffee maker, tea making facilities, iHome radio alarm-clock and charger for iPhone, iPod & iPad	€ 350.00	€ 350.00
John F. Kennedy Suite* (max. 4 people) 1 double bed, 1 bunk bed (size 0.80 x 2 meter) in a small children's area, living room	Air-conditioning, balcony, sauna, whirlpool, 2 flat screens TV's, safe, minibar, coffee maker, tea making facilities, iHome radio alarm clock as well as a charging station for iPhone, iPod & iPad	€ 800.00	€ 800.00

*Not suitable for wheelchair users.

**Bunk bed can only be used for children, due to the size.



T I P S

Want to do some sports and relaxation?

At the Fitness & Spa New England, you can perfectly combine fitness and relaxation. Train like a professional on an area of over 400 m² and afterwards treat yourself and relax in the different saunas.

Admission prices: summer season 2013 23.03. – 03.11.2013

	Children (4 – 11 years)	Adults (12+)
1-day ticket	€ 34.00	€ 39.00
2-day ticket	€ 63.50	€ 73.00
Price for 3 days entrance ticket upon request.		

All prices p.p.

4-star superior themed hotel "Santa Isabel"

Individual guests

Adults (12+)	Summer season 2013 23.03. – 03.11.2013			Winter season 2013/2014 23.11.2013 – 06.01.2014 (except 24/25.12.13)
	B&B	2-Day package 1 x B&B + 2 x admission	3-Day package 2 x B&B + 3 x admission	B&B
5/6-bed room	€ 66.00	€ 139.00	€ 226.00	€ 66.00
4-bed room	€ 74.00	€ 147.00	€ 242.00	€ 74.00
3-bed room	€ 81.50	€ 154.50	€ 257.00	€ 81.50
Double room	€ 101.50	€ 174.50	€ 297.00	€ 101.50
Single room	€ 158.50	€ 231.50	€ 411.00	€ 158.50

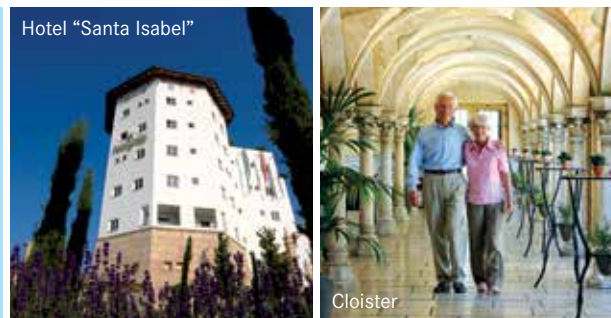
Children (4 – 11 years)	Summer season 2013 23.03. – 03.11.2013			Winter season 2013/2014 23.11.2013 – 06.01.2014 (except 24/25.12.13)
	B&B	2-Day package 1 x B&B + 2 x admission	3-Day package 2 x B&B + 3 x admission	B&B
5/6-bed room	€ 43.50	€ 107.00	€ 168.00	€ 43.50
4-bed room	€ 49.00	€ 112.50	€ 179.00	€ 49.00
3-bed room	€ 57.50	€ 121.00	€ 196.00	€ 57.50
Double room	€ 77.50	€ 141.00	€ 236.00	€ 77.50

All prices p.p.

Our reservation suggestion:

- "Deluxe" room (max. 4 people), on the 4th floor, with minibar, safe and a bedroom with 1 double bed and 1 bunk bed: **€ 95.00 extra charge per room/night** on the above mentioned prices!

- The price category is defined by the number of paying visitors over 4 years of age.
- The price reduction for children in a multi-bed room assumes the presence of at least one adult.
- In the case of a multi-bed standard room, accommodation is in a common sleeping room. There is no entitlement to separate sleeping quarters.
- Children up to age 3 sleep in their parents' bed free of charge, but max. one child in the parental bed. Cots available on inquiry (€ 6.00/day).
- The price of a separate bed for children under 4 years is € 15.00/day.
- The bunk beds in the themed hotel "Santa Isabel" are suitable only for persons up to 1.75 m in height.
- In the themed hotel "Santa Isabel", all rooms and suites are air-conditioned.



4-star superior themed hotel "Santa Isabel"

Individual guests

Suites	Characteristics	Summer season 2013 23.03. – 03.11.2013	Winter season 2013/2014 23.11.2013 – 06.01.2014 (except 24/25.12.13)
		Extra charge per room/ night on the standard room prices	Extra charge per room/ night on the standard room prices
Themed suite (max. 4 people) 1 bedroom, 1 bunk bed in living room	Air-conditioning, balcony, bathtub, iHome iP90 Dual Alarm Clock Radio, 2 flat screen TV's, safe, minibar	€ 200.00	€ 200.00
Sagrado suite (max. 4 people) 1 bedroom, 1 bunk bed in living room	Air-conditioning, balcony, bathtub, iHome iP90 Dual Alarm Clock Radio, 2 flat screen TV's, safe, minibar	€ 300.00	€ 300.00

The bunk beds in the themed hotel "Santa Isabel" are suitable only for persons up to 1.75 m in height.



	Children (4 – 11 years)	Adults (12+)
Admission prices: summer season 2013 23.03. – 03.11.2013		
1-day ticket	€ 34.00	€ 39.00
2-day ticket	€ 63.50	€ 73.00
Price for 3 days entrance ticket upon request.		

All prices p.p.

T I P S

Monastery gates are open

The themed hotel "Santa Isabel" is also open from Friday to Sunday during the Feel Good Weeks. For prices, see p. 24.

How about some day dreaming?

You can dream all year round in the Wellness & Spa "Santa Isabel" with panorama sauna, steam bath and a wide range of feel good treatments! Find out more on p. 29.

4-star superior themed hotel "Colosseo"

Individual guests

Adults (12+)	Summer season 2013 23.03. – 03.11.2013			Winter season 2013/2014 23.11.2013 – 06.01.2014 (except 24/25.12.13)
	B&B	2-Day package 1 x B&B + 2 x admission	3-Day package 2 x B&B + 3 x admission	B&B
5/6-bed room	€ 62.50	€ 135.50	€ 219.00	€ 62.50
4-bed room	€ 70.50	€ 143.50	€ 235.00	€ 70.50
3-bed room	€ 78.00	€ 151.00	€ 250.00	€ 78.00
Double room	€ 97.00	€ 170.00	€ 288.00	€ 97.00
Single room	€ 149.50	€ 222.50	€ 393.00	€ 149.50

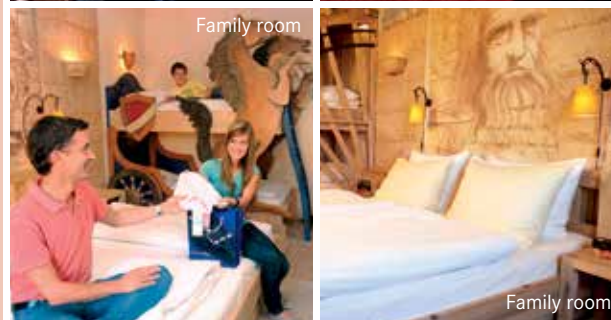
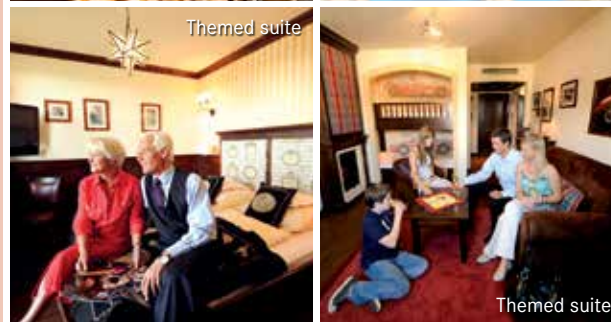
Children (4 – 11 years)	Summer season 2013 23.03. – 03.11.2013			Winter season 2013/2014 23.11.2013 – 06.01.2014 (except 24/25.12.13)
	B&B	2-Day package 1 x B&B + 2 x admission	3-Day package 2 x B&B + 3 x admission	B&B
5/6-bed room	€ 41.00	€ 104.50	€ 163.00	€ 41.00
4-bed room	€ 46.50	€ 110.00	€ 174.00	€ 46.50
3-bed room	€ 55.00	€ 118.50	€ 191.00	€ 55.00
Double room	€ 74.00	€ 137.50	€ 229.00	€ 74.00

All prices p.p.

Our reservation suggestion:

- "Standard plus room" with view on the inner-courtyard: **€ 20.00 extra charge per room/night** on the above mentioned prices!
- "Deluxe" room (max. 6 people) with separate children's bedroom, air-conditioning and beautiful view on the inner-courtyard: **€ 95.00 extra charge per room/night** on the above mentioned prices!

- The price category is defined by the number of paying visitors over 4 years of age.
- The price reduction for children in a multi-bed room assumes the presence of at least one adult.
- In the case of a multi-bed standard room, accommodation is in a common sleeping room. There is no entitlement to separate sleeping quarters.
- Children up to age 3 sleep in their parents' bed free of charge, but max. one child in the parental bed. Cots available on inquiry (€ 6.00/day).
- The price of a separate bed for children under 4 years is € 15.00/day.



4-star superior themed hotel "Colosseo"

Individual guests

Suites	Characteristics	Summer season 2013 23.03. – 03.11.2013	Winter season 2013/2014 23.11.2013 – 06.01.2014 (except 24/25.12.13)
		Extra charge per room/ night on the standard room prices	Extra charge per room/ night on the standard room prices
Junior suite (max. 2 people) 1 room as living and sleeping quarter	Air-conditioning, view over the inner- courtyard, iHome iP90 Dual Alarm Clock Ra- dio, 1 flat screen TV, safe, minibar	€ 150.00	€ 150.00
Themed suite (max. 4 people) 1 bedroom and 1 bunk bed in living room	Air-conditioning, bathtub, iHome iP90 Dual Alarm Clock Radio, 2 flat screen TV's, safe, minibar	€ 200.00	€ 200.00
Presidential suite (max. 6 people) 2 en-suite bedrooms, 1 bunk bed in living room	Air-conditioning, bathtub, balcony, iHome iP90 Dual Alarm Clock Radio, 3 flat screen TV's, safe, minibar	€ 300.00	€ 300.00

Suites in the Colosseum arch*

Suite Venus (max. 4 people) 1 bedroom, 1 bunk bed in living room	Air-conditioning, ba- thtub, balcony, iHome iP90 Dual Alarm Clock Radio, 2 flat screen TV's, safe, minibar	€ 350.00	€ 350.00
Suite Arminius (max. 4 people) 1 bedroom, 1 bunk bed in living room	Air-conditioning, ba- thtub, balcony, iHome iP90 Dual Alarm Clock Radio, 2 flat screen TV's, safe, minibar	€ 350.00	€ 350.00
Suite Augustus (max. 4 people) 1 bedroom, 1 bunk bed in living room	Air-conditioning, ba- thtub, balcony, iHome iP90 Dual Alarm Clock Radio, 2 flat screen TV, safe, minibar	€ 350.00	€ 350.00
Caesare & Cleopatra (max. 4 people) 2 en-suite bedrooms and 1 living room area	Air-conditioning, coffee machine, balco- ny with sauna and whirlpool, musical- bathtub, iHome iP90 Dual Alarm Clock Radio, 4 flat screen TV's, safe, minibar	€ 800.00	€ 800.00

*Not suitable for wheelchair users.



	Children (4 – 11 years)	Adults (12+)
Admission prices: summer season 2013 23.03. – 03.11.2013		
1-day ticket	€ 34.00	€ 39.00
2-day ticket	€ 63.50	€ 73.00
Price for 3 days entrance ticket upon request.		

All prices p.p.

T I P S

Hotel tour

Care to look around the various room categories before booking? Then check out our homepage at www.europapark.de/hotels with 360° pictures!

"Dolce Vita" all year round

Did you know that the hotel "Colosseo" is open all the year round? The prices for the Feel Good Weeks can be found on p. 24!

4-star castle hotel "Castillo Alcazar"

Individual guests

Adults (12+)	Summer season 2013 23.03. – 03.11.2013			Winter season 2013/2014 23.11.2013 – 06.01.2014 (except 24/25.12.13)
	B&B	2-Day package 1 x B&B + 2 x admission	3-Day package 2 x B&B + 3 x admission	B&B
5-bed room	€ 59.00	€ 132.00	€ 212.00	€ 59.00
4-bed room	€ 67.00	€ 140.00	€ 228.00	€ 67.00
3-bed room	€ 74.50	€ 147.50	€ 243.00	€ 74.50
Double room	€ 92.50	€ 165.50	€ 279.00	€ 92.50
Single room	€ 143.50	€ 216.50	€ 381.00	€ 143.50

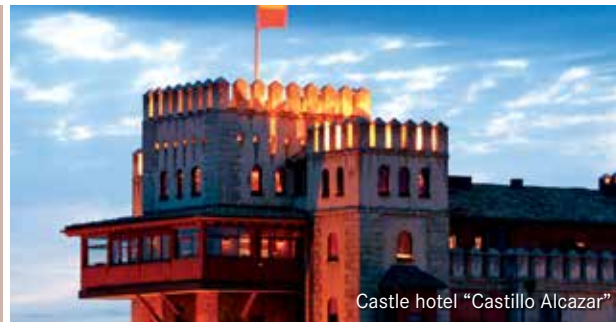
Children (4 – 11 years)	Summer season 2013 23.03. – 03.11.2013			Winter season 2013/2014 23.11.2013 – 06.01.2014 (except 24/25.12.13)
	B&B	2-Day package 1 x B&B + 2 x admission	3-Day package 2 x B&B + 3 x admission	B&B
5-bed room	€ 39.00	€ 102.50	€ 159.00	€ 39.00
4-bed room	€ 44.50	€ 108.00	€ 170.00	€ 44.50
3-bed room	€ 52.00	€ 115.50	€ 185.00	€ 52.00
Double room	€ 70.00	€ 133.50	€ 221.00	€ 70.00

All prices p.p.

Our reservation suggestion:

- **"Standard plus room"** with sumptuous view over Europa-Park: **€ 20.00 extra charge per room/night** on the above mentioned prices!
- **"Comfort" room** (max. 5 people) with 2 double beds and 1 sofa bed in 2 separate rooms: **€ 75.00 extra charge per room/night** on the above mentioned prices!
- **"Deluxe" room** (max. 2 people) with air-conditioning, balcony, safe and minibar: **€ 95.00 extra charge per room/night** on the above mentioned prices!

- The price category is defined by the number of paying visitors over 4 years of age.
- The price reduction for children in a multi-bed room assumes the presence of at least one adult.
- In the case of a multi-bed standard room, accommodation is in a common sleeping room. There is no entitlement to separate sleeping quarters.
- Children up to age 3 sleep in their parents' bed free of charge, but max. one child in the parental bed. Cots available on inquiry (€ 6.00/day).
- The price of a separate bed for children under 4 years is €15.00/day.



Castle hotel "Castillo Alcazar"



Bar "Buena Vista Club"



Restaurant "Castillo"



Family room

4-star castle hotel "Castillo Alcazar"

Individual guests

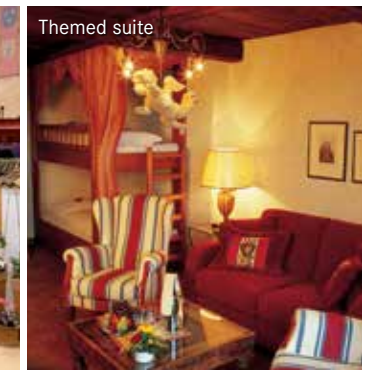
Suites	Characteristics	Summer season 2013 23.03. – 03.11.2013	Winter season 2013/2014 23.11.2013 – 06.01.2014 (except 24/25.12.13)
		Extra charge per room/night on the standard room prices	Extra charge per room/night on the standard room prices
Themed suite (max. 4 people) 1 bedroom, 1 bunk bed in the living room area	Air-conditioning, balcony, bathtub, 2 flat screen TV's, safe, minibar	€ 200.00	€ 200.00
Presidential suite (max. 6 people) 3 bedrooms, including one with 1 bunk bed	Air-conditioning, balcony, bathtub, 3 flat screen TV's, safe, minibar	€ 300.00	€ 300.00



Presidential suite "Emperor Charles V"



"Pueblo del Agua"



Themed suite



T I P S

Dining in style

Book your dinner at the same time! For example a table at the "Castillo" castle buffet restaurant, where you will dine like a prince alongside accoutrements of knighthood and coats of arms. Table reservations at +49 7822 860-5517!

Children will rave

The fountains make almost as big a splash as the children themselves in the children's water playground "Pueblo del Agua"! And in the evening, when the park is closed, Euromaus dances with the young disco-goers in the Spanish themed area (during summer and winter season).

	Children (4 – 11 years)	Adults (12+)
Admission prices: summer season 2013 23.03. – 03.11.2013		
1-day ticket	€ 34.00	€ 39.00
2-day ticket	€ 63.50	€ 73.00
Price for 3 days entrance ticket upon request.		

All prices p.p.

4-star themed hotel "El Andaluz"

Individual guests

Adults (12+)	Summer season 2013 23.03. – 03.11.2013			Winter season 2013/2014 23.11.2013 – 06.01.2014 (except 24/25.12.13)
	B&B	2-Day package 1 x B&B + 2 x admission	3-Day package 2 x B&B + 3 x admission	B&B
4-bed room	€ 67.00	€ 140.00	€ 228.00	€ 67.00
3-bed room	€ 74.50	€ 147.50	€ 243.00	€ 74.50
Double room	€ 92.50	€ 165.50	€ 279.00	€ 92.50
Single room	€ 143.50	€ 216.50	€ 381.00	€ 143.50

Children (4 – 11 years)	Summer season 2013 23.03. – 03.11.2013			Winter season 2013/2014 23.11.2013 – 06.01.2014 (except 24/25.12.13)
	B&B	2-Day package 1 x B&B + 2 x admission	3-Day package 2 x B&B + 3 x admission	B&B
4-bed room	€ 44.50	€ 108.00	€ 170.00	€ 44.50
3-bed room	€ 52.00	€ 115.50	€ 185.00	€ 52.00
Double room	€ 70.00	€ 133.50	€ 221.00	€ 70.00

All prices p.p.

Our reservation suggestion:

- **"Comfort" room** (max. 3 people) with balcony & minibar: **€ 75.00 extra charge per room/night** on the above mentioned prices!
- **"Deluxe" room** (max. 5 people) with 1 bedroom and 1 bunk bed + 1 sofa bed in the living room area, minibar and bathtub: **€ 95.00 extra charge per room/night** on the above mentioned prices!

- The price category is defined by the number of paying visitors over 4 years of age.
- The price reduction for children in a multi-bed room assumes the presence of at least one adult.
- In the case of a multi-bed standard room, accommodation is in a common sleeping room. There is no entitlement to separate sleeping quarters.
- Children up to age 3 sleep in their parents' bed free of charge, but max. one child in the parental bed. Cots available on inquiry (€ 6.00/day).
- The price of a separate bed for children under 4 years is € 15.00/day.



Inner yard with pool "El Andaluz"



Bar "El Circo"



Family room

4-star themed hotel "El Andaluz"

Individual guests

Suites	Characteristics	Summer season 2013 23.03. – 03.11.2013	Winter season 2013/2014 23.11.2013 – 06.01.2014 (except 24/25.12.13)
		Extra charge per room/ night on the standard room prices	Extra charge per room/ night on the standard room prices
Themed suite (max. 4 people) 1 bedroom and 1 bunk bed in living room	Air-conditioning, bathtub, 2 flat screen TV's, safe, minibar	€ 200.00	€ 200.00
Royal suite* (max. 4 people) 1 bedroom and 1 bunk bed in living room	Air-conditioning, balcony, bathtub, 2 flat screen TV's, safe, minibar	€ 300.00	€ 300.00

*Not suitable for wheelchair users.



	Children (4 – 11 years)	Adults (12+)
Admission prices: summer season 2013 23.03. – 03.11.2013		
1-day ticket	€ 34.00	€ 39.00
2-day ticket	€ 63.50	€ 73.00
Price for 3 days entrance ticket upon request.		

All prices p.p.

T I P S

VIP admission

Europa-Park hotel guests benefit from a VIP-entrance giving direct access to Europa-Park (valid admission ticket required). During the summer season, some attractions are open especially for hotel residents 30 minutes before the official park opening time and in winter as much as 60 minutes before official opening.

Spanish evening magic

As a guest of the Europa-Park hotels, you may stroll through the Spanish themed area of Europa-Park in the evenings (the rides operate only during the regular park opening hours).



Themed suite



Themed suite



Lobby

NEW



Europe Round Trip

Hopping Pass for the Europa-Park themed resort incl. annual season ticket

You arrive once, stay in all five Europa-Park hotels and visit in total 17 European themed areas at Europa-Park for six days. This and lots more is included in the amazing round trip!

After an overnight stay in the Spanish summer villa of the 4-star themed hotel "El Andaluz" you will conquer the 4-star castle hotel "Castillo Alcazar" for your second night. Your third night will be all about peace, reflexion and inspiration as you are surrounded by the Portuguese monastery at the 4-star superior themed hotel "Santa Isabel". The fourth night will lead you to Italy and the 4-star superior Roman-Italian themed hotel "Colosseo". The 35 meter high lighthouse will guide you to your room in the 4-star superior New England hotel "Bell Rock" for the fifth and last night of your stay.

And the best thing is that you can not only visit Europa-Park with its more than 100 attractions and shows on all days of your stay but for the whole year! Upon arrival you will receive an **annual season ticket!**

Europe Round Trip – services included:

- 5 night accommodation incl. breakfast.
- Europa-Park annual season ticket p.p. (valid from day of arrival)
- Transfer of your luggage
- Free parking in front of the hotels
- Free use of all four pool and sauna areas
- Free use of the Fitness & Spa New England (from 16 years).

Booking information:

- The package is available during the summer season 2013 as well as the winter season 2013/2014.
- Sunday is the day of arrival for this package.
- This offer can not be combined with other offers.

	Adults (from 12 years)	Seniors (from 60 years)	Children (4-11 years)
5-bed room	€ 381.50	€ 364.50	€ 283.00
4-bed room	€ 411.50	€ 394.50	€ 303.00
3-bed room	€ 437.00	€ 420.00	€ 332.50
Double room	€ 504.00	€ 487.00	€ 400.00
Single room	€ 695.50	€ 678.50	–

All prices p.p.



To make a reservation call +49 7822 860-5679 or www.europapark.de/hopping-pass

4-star superior themed hotel "Bell Rock" and "Santa Isabel"

Group prices

Adults (12+)	Summer season 2013 23.03. – 03.11.2013			Winter season 2013/2014 23.11.2013 – 06.01.2014 (except 24/25.12.13)
	B&B	2-Day package 1 x B&B + 2 x admission	3-Day package 2 x B&B + 3 x admission	B&B
5/6-bed room	€ 60.00	€ 125.50	€ 214.00	€ 60.00
4-bed room	€ 67.00	€ 132.50	€ 228.00	€ 67.00
3-bed room	€ 73.50	€ 139.00	€ 241.00	€ 73.50
Double room	€ 91.50	€ 157.00	€ 277.00	€ 91.50
Single room	€ 143.50	€ 209.00	€ 381.00	€ 143.50

Children (4 – 11 years)	Summer season 2013 23.03. – 03.11.2013			Winter season 2013/2014 23.11.2013 – 06.01.2014 (except 24/25.12.13)
	B&B	2-Day package 1 x B&B + 2 x admission	3-Day package 2 x B&B + 3 x admission	B&B
5/6-bed room	€ 39.50	€ 103.00	€ 160.00	€ 39.50
4-bed room	€ 44.50	€ 108.00	€ 170.00	€ 44.50
3-bed room	€ 52.50	€ 116.00	€ 186.00	€ 52.50
Double room	€ 70.50	€ 134.00	€ 222.00	€ 70.50

All prices p.p.

- The above prices apply to groups of 20 paying visitors or more.
- Per 20 paying visitors we grant one free place in a double room and free admission to Europa-Park!
- In addition, per coach group of 50 persons, the driver stays free of charge (accommodation according to availability in hotel or guesthouse).
- Bus stop at the Europa-Park hotels
- Coach parking area at main entrance of Europa-Park included.
- A luggage room is available in the hotel.
- The bunk beds in the themed hotel "Santa Isabel" are suitable only for persons up to 1.75 m tall.
- Convenient group check-in is possible at the Guest-Relations desk from 10 am on (only at the hotel "Bell Rock"). Earlier arrivals can check in with any reception staff.
- The general information in the price list and the information for and privileges of hotel residents also apply, see page 37.



Conference room "Refectorium"



Standard room "Bell Rock"

4-star superior themed hotel “Colosseo”

Group prices

Adults (12+)	Summer season 2013 23.03. – 03.11.2013			Winter season 2013/2014 23.11.2013 – 06.01.2014 (except 24/25.12.13)
	B&B	2-Day package 1 x B&B + 2 x admission	3-Day package 2 x B&B + 3 x admission	B&B
5/6-bed room	€ 56.50	€ 122.00	€ 207.00	€ 56.50
4-bed room	€ 64.50	€ 130.00	€ 223.00	€ 64.50
3-bed room	€ 70.50	€ 136.00	€ 235.00	€ 70.50
Double room	€ 87.50	€ 153.00	€ 269.00	€ 87.50
Single room	€ 135.00	€ 200.50	€ 364.00	€ 135.00

Children (4 – 11 years)	Summer season 2013 23.03. – 03.11.2013			Winter season 2013/2014 23.11.2013 – 06.01.2014 (except 24/25.12.13)
	B&B	2-Day package 1 x B&B + 2 x admission	3-Day package 2 x B&B + 3 x admission	B&B
5/6-bed room	€ 37.50	€ 101.00	€ 156.00	€ 37.50
4-bed room	€ 42.50	€ 106.00	€ 166.00	€ 42.50
3-bed room	€ 50.00	€ 113.50	€ 181.00	€ 50.00
Double room	€ 67.50	€ 131.00	€ 216.00	€ 67.50

All prices p.p.

- The above prices apply to groups of 20 paying visitors or more.
- Per 20 paying visitors we grant one free place in a double room and free admission to Europa-Park!
- In addition, per coach group of 50 persons, the driver stays free of charge (accommodation according to availability in hotel or guesthouse).
- Bus stop at the Europa-Park hotels
- Coach parking area at main entrance of Europa-Park included.
- A luggage room is available in the hotel.
- Convenient group check-in is possible at the Guest-Relations desk from 10 am on. Earlier arrivals can check in with any reception staff.
- The general information in the price list and the information for and privileges of hotel residents also apply, see page 37.

4-star castle hotel “Castillo Alcazar” 4-star themed hotel “El Andaluz”

Group prices

Adults (12+)	Summer season 2013 23.03. – 03.11.2013			Winter season 2013/2014 23.11.2013 – 06.01.2014 (except 24/25.12.13)
	B&B	2-Day package 1 x B&B + 2 x admission	3-Day package 2 x B&B + 3 x admission	B&B
5-bed room*	€ 53.50	€ 119.00	€ 201.00	€ 53.50
4-bed room	€ 61.00	€ 126.50	€ 216.00	€ 61.00
3-bed room	€ 67.50	€ 133.00	€ 229.00	€ 67.50
Double room	€ 83.50	€ 149.00	€ 261.00	€ 83.50
Single room	€ 129.50	€ 195.00	€ 353.00	€ 129.50

Children (4 – 11 years)	Summer season 2013 23.03. – 03.11.2013			Winter season 2013/2014 23.11.2013 – 06.01.2014 (except 24/25.12.13)
	B&B	2-Day package 1 x B&B + 2 x admission	3-Day package 2 x B&B + 3 x admission	B&B
5-bed room*	€ 35.50	€ 99.00	€ 152.00	€ 35.50
4-bed room	€ 40.50	€ 104.00	€ 162.00	€ 40.50
3-bed room	€ 47.50	€ 111.00	€ 176.00	€ 47.50
Double room	€ 63.50	€ 127.00	€ 208.00	€ 63.50

All prices p.p.
*only at hotel “Castillo Alcazar”

- The above prices apply to groups of 20 paying visitors or more.
- Per 20 paying visitors we grant one free place in a double room and free admission to Europa-Park!
- In addition, per coach group of 50 persons, the driver stays free of charge (accommodation according to availability in hotel or guesthouse).
- Bus stop at the Europa-Park hotels
- A luggage room is available in the hotel.
- Coach parking area at main entrance of Europa-Park included.
- Convenient group check-in is possible at the Guest-Relations desk (from 10 am on). Earlier arrivals can check in with any reception staff.
- The general information in the price list and the information for and privileges of hotel residents also apply, see page 37.



Camp Resort

Stay overnight in one of our **log-cabins**, in one of the rooms equipped with bunk beds. Or enjoy a cowboy like night in one of the **Tepee tents** or **covered wagons** after an unforgettable day at Europa-Park.

Summer season 2013 (23.03. – 03.11.2013)			
	Individual guests	Groups at least 20 paying people*	School classes**
Covered wagon			
4-bed covered wagon	€ 96.00	€ 96.00	€ 66.00
Tepee tent			
4-bed tepee tent	€ 80.00	€ 80.00	€ 66.00
6-bed tepee tent	€ 120.00	€ 120.00	€ 99.00
12-bed tepee tent	€ 240.00	€ 240.00	€ 198.00
Log-cabin room			
4-bed room	€ 96.00	€ 96.00	€ 66.00
6-bed room	€ 144.00	€ 144.00	€ 99.00
12-bed room	€ 288.00	€ 288.00	€ 198.00
16-bed room	€ 384.00	€ 384.00	€ 264.00

A 4-bed accommodation is suitable for max. 4 people, 6-bed for max. 6 people, etc. Price per night/accommodation.

Breakfast prices

	Individual guests	Groups at least 20 paying people*	School classes**
Per child (4-11 years)	€ 4.50	€ 4.50	€ 4.50
Per adult (from 12 years)	€ 8.50	€ 8.50	€ 4.50

Admission prices to Europa-Park in connection with an overnight stay at the Camp Resort:

Summer season 2013 (23.03. – 03.11.2013)						
	Individual guests		Groups at least 20 paying people		School classes**	
	Per Child (4-11 years)	Per adult (from 12 years)	Per Child (4-11 years)	Per adult (from 12 years)	Per Child (4-11 years)	Per adult (from 12 years)
1-day ticket	€ 34.00	€ 39.00	€ 33.00	€ 33.00	€ 23.50	€ 23.50
2-day ticket	€ 63.50	€ 73.00	€ 63.50	€ 65.50	€ 43.50	€ 43.50

Price for 3 days entrance ticket upon request.

* Groups of 20 paying visitors will additionally have one free accommodation and a second one from the 42nd person on. Per bus group of 50 people one driver stays for free (accommodation for the driver is at the guest house or Camp Resort depending on availability).

** School class prices are only granted if a confirmation from the head of the school is shown upon arrival. Prices are only valid for arrivals between Sunday and Friday and only outside the school holidays of Bavaria and Baden-Württemberg and are not available on German bank holidays. For every 10 students one teacher is free. Those prices are not valid for students/pupils who travel alone.

- Just five minutes on foot to Europa-Park's main entrance.
- Free parking at the Camp Resort.
- All accommodations have heating, electricity and light.
- Equipped with mattresses, fitted sheets and pillows; don't forget to bring a sleeping bag and towels!
- Modern sanitary facilities in separate building.
- Firewood available locally.
- Further information about amenities on p. 38/39 and at www.europapark.de/camp-resort

You can mix and match the days of admission and accommodation as it suits you best.



T I P S

For school classes

The free **Knowledge Rallies** about the 13 European themed areas are a great way to discover Europa-Park and the **packed lunch offers** will help to revitalise after an extensive science tour! Information: www.europapark.de/schooltrip.

“Winnetou’s Honeymoon Suite” (Summer & Winter season)



Equipment: 2 double beds, flat screen TV, air-conditioning, safe, mini-bar, bathroom with WC and under-floor heating, little terrace

Family offer:

Reservation for 2 adults from €180.00/night, admission & breakfast non-included, with “Kids for free” – 2 children (from 4 to 11 years) spend the night for free and pay only for the breakfast and the admission!

Camping Europa-Park

	Summer season 2013 23.03. – 03.11.2013		Winter season 2013/2014 23.11.2013 – 06.01.2014 (except 24/25.12.13)	
	Per hour	Max.	Per hour	Max.
Day-time rate (8 am – 8 pm)	€ 2.00	€ 6.00	€ 2.00	€ 6.00
Night-time rate (8 pm – 8 am)	€ 2.00	€ 22.00	€ 2.00	€ 22.00

For 1 car with caravan/trailer, 1 motor home or 1 car with 1-2 tents; 200 spaces also for oversized caravans/trailers and motor homes; grounds open 24h; no reservations; payment via admission ticket (similar to a car park); no credit-card payments; space charge for tent site without car: € 13.00 (Payment to one of our staff after overnight stay).



Log-Cabin winter 2013/2014

Winter season 2013/2014 23.11.2013 – 06.01.2014 (except 24/25.12.13) Saturdays and Sundays from the 26 th of December onwards		
	Individual guests	Groups at least 20 paying people 1 free accommodation for 20 paying people, a second one from the 42 nd person on.)
4-bed room	€ 96.00	€ 96.00
6-bed room	€ 144.00	€ 144.00
12-bed room	€ 288.00	€ 288.00
16-bed room	€ 384.00	€ 384.00

A 4-bed accommodation is suitable for max. 4 people, 6-bed for max. 6 people, etc. Price per night/accommodation.

Breakfast prices

	Individual guests	Groups at least 20 paying people
Per child (4-11 years)	€ 4.50	€ 4.50
Per adult (from 12 years)	€ 8.50	€ 8.50

Feel Good Weeks (3rd – 22nd Nov 2013 and 06th Jan until start of the season 2014)

Relaxation and a feel good atmosphere is what you can expect while Europa-Park is closed between the summer and winter season as well as between the winter and summer season.

1 overnight stay incl. breakfast buffet at the 4-star superior themed hotel "Bell Rock" or "Colosseo" (from Sunday to Thursday)

B&B	Adults (12+)	Children (4 – 11 years)
5/6-bed room	€ 40.00	€ 35.00
4-bed room	€ 43.00	€ 35.00
3-bed room	€ 50.00	€ 35.00
Double room	€ 60.00	€ 35.00
Single room	€ 85.00	-

All prices p.p.

1 overnight stay incl. breakfast buffet at the 4-star superior themed hotel "Bell Rock", "Colosseo" or "Santa Isabel" (on Fridays and Saturdays)

B&B	Adults (12+)	Children (4 – 11 years)
5/6-bed room	€ 60.00	€ 35.00
4-bed room	€ 63.00	€ 35.00
3-bed room	€ 70.00	€ 35.00
Double room	€ 80.00	€ 35.00
Single room	€ 105.00	-

All prices p.p.



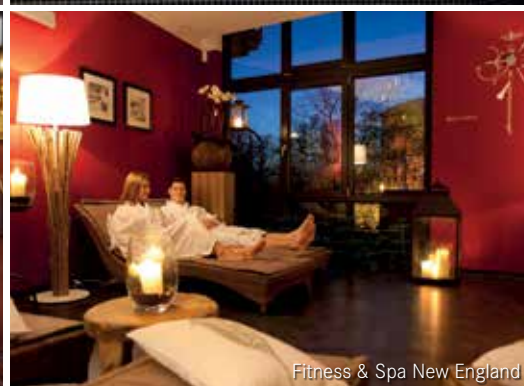
Suite "Venus" in the Colosseum arch



Sauna "Blue Lagoon"



Time for one and another



Fitness & Spa New England

Feel Good Weeks (3rd – 22nd Nov 2013 and 06th Jan until start of the season 2014)

Relaxation and a feel good atmosphere is what you can expect while Europa-Park is closed between the summer and winter season as well as between the winter and summer season.

Suites in the hotel "Bell Rock"	Extra charge per room/night on the standard room prices
Themed suite (max. 4 people) 1 bedroom and 1 bunk bed in the living room	€ 200.00
Penthouse suite (max. 6 people) 2 bedrooms with separate bathrooms and 1 bunk bed in the living room	€ 300.00
Presidential suite* (max. 6 people) 2 bedrooms and 1 bunk bed in the living room area, on two floors, 2 bathrooms	€ 300.00
Suites in the lighthouse**	Extra charge per room/night on the standard room prices
Junior suite Abraham Lincoln on the 7 th floor (max. 4 people) 1 double bedroom, 1 bunk bed in the children's room	€ 350.00
Lighthouse suite (max. 4 people) 1 bedroom and 1 bunk bed in the children's room	€ 350.00
Lighthouse suite "Ahoi Heimat" by Stefan Strumbel (max. 4 people) 1 double bedroom, 1 bunk bed	€ 350.00
John F. Kennedy suite* (max. 4 people) 1 double bed, 1 bunk bed (size 0.80x2 meter) in a small children's area, living room, sauna and whirlpool	€ 800.00

*Not suitable for wheelchair users.

**Due to their size the bunk beds in the suites are only suitable for children.

Suites in the hotel "Colosseo"	Extra charge per room/night on the standard room prices
Junior suite (max. 2 people) 1 bedroom and living room	€ 150.00
Themed suite (max. 4 people) 1 bedroom, 1 bunk bed in living room	€ 200.00
Presidential suite (max. 6 people) 2 en-suite bedrooms, 1 bunk bed in living room	€ 300.00
Suites in the Colosseum arch*	Extra charge per room/night on the standard room prices
Suite Venus (max. 4 people) 1 bedroom, 1 bunk bed in living room	€ 350.00
Suite Arminius (max. 4 people) 1 bedroom, 1 bunk bed in living room	€ 350.00
Suite Augustus (max. 4 people) 1 bedroom, 1 bunk bed in living room	€ 350.00
Caesare & Cleopatra (max. 4 people) 2 en-suite bedrooms, balcony with sauna and whirlpool	€ 800.00

*Not suitable for wheelchair users.

Suites in the hotel "Santa Isabel"	Extra charge per room/night on the standard room prices
Themed suite (max. 4 people) 1 bedroom, 1 bunk bed in living room	€ 200.00
Sagrado suite (max. 4 people) 1 bedroom, 1 bunk bed in living room	€ 300.00

The bunk beds in the themed hotel "Santa Isabel" are only suitable for people max. 1.75 m tall.

Feel Good Weeks Packages

(3rd – 22nd Nov 2013 and 06th Jan until start of the season 2014)

“Quality time for two”

Sparkling welcome drink for lovers

1 romantic 4-course candle-light dinner that will bring a magic twinkle to your eyes

1 heavenly stay in a themed double room

Lavish and delectable breakfast buffet

Feel good moments guaranteed:

Free use of fantastic feel good amenities with pool, sauna and steam bath as well as the Fitness & Spa New England

€ 115.00 (from Sunday to Thursday) / **€ 135.00** (on Fridays and Saturdays)

Per person sharing double room. Can only be booked directly; no gift vouchers available for this package.

Book at www.europapark.de/reservation
Information at www.europapark.de/feel-good-weeks

Book early and save! “quality time for two - royal”

Book the special “quality time for two” offer at least 8 weeks in advance and you will not only get the services mentioned above but you will also be staying in one of our nicest suites. The offer is available from Sunday until Friday. The full amount is due for payment when booking. Further information at www.europapark.de/feel-good-weeks



Partner treatment at Wellness & Spa “Santa Isabel”



T I P S

Come along and enjoy

Pasta weeks, Asia weeks, Thanksgiving and kitchen parties! During the feel good weeks the restaurants in our themed hotels “Bell Rock” and “Colosseo” offer delicious menus for our hotel guests as well as day visitors. Please find further information at www.europapark.de/feel-good-weeks.

Wellness & Spa “Bell Rock”



Contact

Tel: +49 7822 860-5930

E-mail: wellness-bellrock@europapark.de
www.europapark.de/wellness-bellrock

Opening times

Mon to Fri: 9 am to 9 pm
Sat and Sun: 10 am to 9 pm

Other times by arrangement

Open all year round – only for hotel guests



Sea-salt & oil full body scrub

Minerals and micronutrients of sea salt in combination with warm oil will transform your skin to be tender and smooth.

25 mins. € 30.00

Thalgo Thalasso alge full body pack

Feel the strength of the sea. Sea algae powder will leverage your metabolism, purifies and mineralises.

30 mins. € 35.00

Captain's massage

Full-body massage with warm oil. Choose yourself which part of your body, your head, face, hands, back or legs, should be treated longer, it's totally up to you!

70 mins. € 80.00



The power of the sea



Hot Stone full-body massage

Wellness & Spa "Colosseo"



Contact	
Tel:	+49 7822 860-5730
Fax:	+49 7822 860-5766
E-mail:	wellness-colosseo@europapark.de www.europapark.de/wellness-colosseo
Opening times	
Mon to Fri:	9 am to 8 pm
Sat and Sun:	10 am to 8 pm
Other times by arrangement	
Open all year round – also for day visitors!	



Shoulder-Neck Massage

For the prevention or the treatment of headaches with Thai herb oil from the PLAI plant. This oil relieves effectively muscle-aches, relaxes hardened muscles and warms up with its blood circulation stimulating effect.

30 mins. € 40.00

Thalga Wellness-Break

This wellness treatment conditions, nourishes and smoothes off from head to toe. As the body is wrapped into soft cream, you will enjoy a relaxing face massage.

- Creamy seaweed peeling
- Body wrap "Velvet and Silk"
- Facial cleansing
- Face massage

60 mins. € 70.00

Treatment for two "Romeo and Julia"

- Cleansing aroma full body scrub
- Exclusive conditioning milk bath
- Relaxing full body massage
- Conclude this ritual with a glass of Geldermann sparkling wine and a praline

110 mins. € 190.00

Wellness for children "Calimero"

At one's choice with honey, lemon or coconut oil

Back massage 20 mins. € 20.00

Full body massage 30 mins. € 30.00

Wellness & Spa "Santa Isabel"



Contact	
Tel:	+49 7822 860-5530
Fax:	+49 7822 860-5531
E-mail:	wellness-santaisabel@europapark.de www.europapark.de/wellness-santaisabel
Opening times	
Mon to Fri:	9 am to 9 pm
Sat and Sun:	10 am to 9 pm
Other times by arrangement	
Open all year round – also for day visitors!	



Hamam Classic

Full-body treatment with warm water flushes, silk glove scrub and soapy lather massage. Eases your muscles and shoulder joints, leaving your skin feeling nourished and your body relaxed.

30 mins. € 40.00

Relaxing Back Massage

This massage eases tensions in the back, shoulders and neck.

30 mins. € 38.00

Rendezvous for Two

Course of treatment:

- Luxurious mother-of-pearl milk bath in the bathtub for two
- Relaxing back massage
- 2 glasses of Geldermann sparkling wine

60 mins. € 110.00

Wellness Pedicure Plus

- Styling of toenails with the chosen OPI polish
- You can keep the chosen polish!

80 mins. € 90.00

More details can be found in our wellness brochure or online.



TIPS

Give away relaxation

Birthdays, Mothers Day, weddings & Christmas; there are many occasions to give away some relaxation. We have the perfect gift idea for you, a gift voucher from our Wellness & Spa areas. Order a gift voucher right away online: www.europapark.de/vouchers

Happy Hour

Mon to Thurs: 9 am to 12.30 pm in the Wellness & Spa "Santa Isabel" and "Bell Rock". 10% off all treatments during these times.



Manicure



Bathtub for couples



Relaxation room



Facial for him



Relaxation room

Offers for our guests aged 60+ at the hotels – summer

At Europa-Park, besides a host of attractions, you can also experience the **culture** and **gastronomy** of different countries, marvel at the **enchanted parks and gardens**, and enjoy a **wide-ranging show programme**. Stay afterwards in a very special ambience in one of the 4-star themed hotels.

Valid for the entire summer season from **23rd March until 3rd November 2013** (except 25th July until 7th September 2013); can be booked from Sundays to Thursdays.

PS: Bring your grandchildren along! They will be thrilled!

The 1-day offer	The 2-day offer	
1 Day unlimited stay in Europa-Park 1 Overnight stay at the Europa-Park Hotels, including sumptuous breakfast buffet 1 Park guide 1 Welcome drink 1 Piece of cake (depending on season) at "Balthasar" Castle	2 Days unlimited stay in Europa-Park 1 Overnight stay at the Europa-Park Hotels, including sumptuous breakfast buffet 1 Park guide 1 Welcome drink 1 Piece of cake (depending on season) at "Balthasar" Castle	
	1-day offer	2-day offer
Hotel "El Andaluz"	€ 116.50	€ 146.00
Hotel "Castillo Alcazar"	€ 116.50	€ 146.00
Hotel "Colosseo"	€ 121.00	€ 150.50
Hotel "Santa Isabel"	€ 125.50	€ 155.00
Hotel "Bell Rock"	€ 125.50	€ 155.00

Per person sharing double room.

Subject to prior booking. No gift vouchers available for this offer.



Special offers for our guests aged 60+ – summer

Special summer offer

Experience not only numerous attractions, but also the culture and cuisines of the different countries. Marvel at the wonderful set up of the parks and enjoy a diverse show programme. Your offer includes admission to Europa-Park for the day, a piece of cake (seasonal variance) at the castle "Balthasar" and a souvenir photo from one of the attractions.

Offer is available from 3rd – 21st June and from 9th – 27th September 2013 (except Saturdays, Sundays and German bank holidays): **€ 34,00** p.p.

Summers' day & summers' afternoon for groups

Enjoy the fantastic landscape and unique scenery at Europa-Park and experience unforgettable moments in a breath-taking ambience together with your club or a group of 20 people or more. You can book this offer for a whole day or an afternoon – directly with your coach company for selected dates. If you need help finding a coach company, please contact us. We will be happy to help. Tel.: +49 7822 77-14250



Winter season at Europa-Park

You can also enjoy Europa-Park in the winter month. Experience wintery Europa-Park and enjoy the atmospheric decorations, the festive Christmas market and the fabulous shows. Why don't you visit Europa-Park around Christmas with your club or group of 20 people or more?

Group offers summer 2013

Gastronomic offers to combine with an admission ticket to Europa-Park	
Park admission included:	
· Bargain-price for adults	€ 42.50
· Bargain-price for vegetarians	€ 42.50
· Bargain-price for children	€ 38.50
Without park admission:	
· Summer menu	€ 17.00
· For our guests 60 +	from € 8.00
· Mediterranean Buffet adults	€ 27.00
· Mediterranean Buffet children	€ 12.00

More information at www.europapark.de/groups



“Lansquenet Meal”

The special luncheon for groups of 30 people or more! Let's go back in time together and enter “Balthasar” Castle, built in 1442. The meal takes 75 minutes, and a jovial herald guides you through the programme, while servant lads and maids clad in medieval garb dish up a hearty meal fit for men-at-arms.

Package: € 28.50 p.p.
+ ticket for admission to Europa-Park



“An afternoon at Balthasars”

The food and fun offer for groups of 20 people or more! Princely food – royal fun: have lunch in the relaxed fairytale setting of the medieval “Balthasar” Castle and experience an eventful afternoon at Europa-Park.

Package: € 33.50 p.p.
Lunch + park admission in the afternoon



All group offers can be booked at +49 7822 77-14400 or via email: confertainment@europapark.de

Evening events all year round

“Medieval Banquet”

Within the historic walls of the “Castle Balthasar”, built in the 15th century, some delicacies which are sovereign worthy are waiting for you. Surrounded by jugglers and players, dancers and fire-eaters you can feast on the 5 course meal in a proper traditional style.


Package: € 72.00 p.p.



“Indonesia Malam”

Let us take you in the mysterious world of Indonesia right in the middle of the exotic flair of restaurant “Bamboe Baai”. You will enjoy a thrilling jungle adventure while tasting delicious Asian specialities.

Package: € 95.00 p.p.



“Western Night”

The saloon doors’ hinges squeak, the smell of powder fills the air, and the cowboys fight to conquer beautiful women... Europa-Park’s “Silver Lake Saloon” awaits you with its genuine western-movie ambience. Go West! Come and feel like a true cowboy!

Package: € 89.00 p.p.




T I P S

The perfect gift idea...

Europa-Park's event gastronomy is a feast for the eyes and palate. What better gift for your business friends or loved ones? Gift vouchers are available at +49 7822 860-5678 or gaesteservice@europapark.de.

Sweet dreams

Sink into heavenly slumbers: combine your event with a stay at one of the 4-star themed hotels at Europa-Park. Further information at confertainment@europapark.de or tel.: +49 7822 77-14400.

Please call +49 7822 860-5678 or email: gaesteservice@europapark.de for dates and booking options.

New Years Eve Offer 2013/2014

Services included hotels "Colosseo", "Castillo Alcazar" and "El Andaluz"

Arrival on 31st Dec 2013; 2 heavenly nights at the 4-star themed hotels "El Andaluz", "Castillo Alcazar" or at the 4-star superior themed hotel "Colosseo"; New Year's Eve gala menu; big New Year's brunch; New Year's dinner; 3 days at Europa-Park; New Year's concert; sumptuous breakfast buffet; departure on 02nd Jan 2014.

	2-nights New Years Eve Package (31.12.2013 – 02.01.2014)	
	Adults (12+)	Children (4 – 11 years)
5*/-6**-bed room	€ 509.50	€ 304.00
4-bed room	€ 525.50	€ 315.00
3-bed room	€ 540.50	€ 332.00
Double room	€ 578.50	€ 370.00
Single room	€ 683.50	-

*Only bookable at the hotel "Colosseo" and castle hotel "Castillo Alcazar".
**Can only be booked for the hotel "Colosseo".
All prices p.p.

34

Services included hotel "Santa Isabel"

Arrival on 31st Dec. 2013 ; 2 nights at the 4-star superior themed hotel "Santa Isabel"; New Year's Eve gala buffet; big New Year's brunch; 3 days at Europa-Park; New Year's dinner incl. beverage allowance at the themed restaurant "Bamboe Baai" in the Dutch themed area; New Year's concert; sumptuous breakfast buffet on departure day; departure on 02nd Jan 2014.

	2-nights New Years Eve Package (31.12.2013 – 02.01.2014)	
	Adults (12+)	Children (4 – 11 years)
5-/6-bed room	€ 534.00	€ 317.50
4-bed room	€ 550.00	€ 328.50
3-bed room	€ 565.00	€ 345.50
Double room	€ 605.00	€ 385.50
Single room	€ 719.00	-

All prices p.p.

Suites and other room categories upon request.



T I P S

For guests of our 'Hotel New Years Eve Offer' we can offer a special arrangement

Arrive the night before the New Years Eve offers starts and book an additional night for a special 'Thank You' rate of € 150.00 per standard room when mentioning the keyword 'New Years Eve Special' (if applicable additional charge for other room categories or suites).

New Years Eve Offer 2013/2014

Services included hotel "Bell Rock"

Arrival on the 30th Dec. 2013; 3 overnight stays at the 4-star superior themed hotel "Bell Rock"; New Year's Eve gala evening with show programme, New Year's brunch, New Year's dinner, 4 days at Europa-Park, sumptuous breakfast buffet on departure day; departure 2nd January 2014.

	3-nights New Years Eve Package (30.12.2013 – 02.01.2014)	
	Adults (12+)	Children (4 – 11 years)
5-/6-bed room	€ 587.00	€ 357.00
4-bed room	€ 611.00	€ 373.50
3-bed room	€ 633.50	€ 399.00
Double room	€ 693.50	€ 459.00
Single room	€ 864.50	-

All prices p.p.

Suites and other room categories upon request.

Services included hotel "Bell Rock" with additional offer: "Ammolite – The Lighthouse Restaurant"

Arrival on the 30th Dec 2013; 3 overnight stays at the 4-star superior themed hotel "Bell Rock"; New Year's Eve: welcome reception at "Roland's Lodge – African Bar"; 8-course gala menu including wines at the restaurant "Ammolite – The Lighthouse Restaurant" and at midnight a champagne salute on the terrace; sumptuous New Year's brunch; New Year's dinner; 4 days at Europa-Park; big breakfast buffet on departure day; departure 2nd January 2014.

	3-nights New Years Eve Package (30.12.2013 – 02.01.2014)	
	Adults (12+)	Children (4 – 11 years)
5-/6-bed room	€ 692.00	€ 359.50
4-bed room	€ 716.00	€ 376.00
3-bed room	€ 738.50	€ 401.50
Double room	€ 798.50	€ 461.50
Single room	€ 969.50	-

All prices p.p.

Suites and other room categories upon request.



35

Event calendar 2013

26/5 – 25/8/2013

Immer wieder sonntags – TV live show (in German)

Stefan Mross presents the live TV show which will guarantee you folk music and pop idols close up!

1/6/2013

Radio Regenbogen – Music@Park

Europa-Park and one of the most popular radio stations “Radio Regenbogen” present the mega party. In addition to numerous live acts, DJs from bigFM are on board to get the audience rocking.

8 – 16/6/2013

Spanische Feria

Regardless whether it's the proud matadors, hot flamenco dancers or fiery musical rhythm the Mediterranean spirit is simply intoxicating. Dive into the assorted mix of a typical Spanish street festival.

27/7/2013

Summer Night Party with 24 hrs Opening

Great live acts, grandiose shows, breathtaking attractions and fantastic fireworks as a highlight – superb entertainment for summer fun!

20 + 21/9 | 27 + 28/9
2 – 5/10/2013

Oktoberfest

The Europa-Park arena presents eight nights of traditional music, original Bavarian white beer and a sociable atmosphere to celebrate the Oktoberfest in style.

Morning pint: 22/9 | 29/9 | 6/10/2013

27 + 28/9 | 2 – 5/10 | 11 – 13/10
18 + 19/10 | 25/10 – 2/11/2013

Horror Nights (recommended for 16 years and above) 24/9: limited exclusive tickets for the premier!

Fearless visitors can dive into their own horror movie during the Horror Nights where monsters, zombies and vampires test their bravery!



Subject to change!

Benefits for hotel guests

Free parking

Park your car free of charge during your entire stay at the themed hotels.

VIP access/earlier admission to Europa-Park

VIP admission to Europa-Park! Europa-Park is open to Europa-Park hotel guests 30 minutes before the park officially opens (valid admission ticket required) and offers selected attractions – in winter, they even get a 60-minute head start.

Breakfast with Euromaus

Euromaus and friends welcome guests of all ages every morning in the various restaurants of our hotels. (During the Europa-Park summer and winter season, not during the Feel Good Weeks).

Pool, sauna & fitness

Relax & chill out in four themed sauna and pool landscapes. If you prefer to be active then you can visit our Europa-Park Fitness-Club with more than 400 m² to exercise and participate in the different classes. Entrance to all of the areas is free of charge for hotel guests.

Shopping service

When you shop at Europa-Park before 3 pm, we deliver your souvenirs directly to the hotel reception where they can be collected after the park closes for the day.

Special conditions for many events of Europa-Park

Hotel guests at the Europa-Park hotels enjoy reduced or free admission to many events.

Spanish themed area in the evenings

As a Europa-Park hotel guest you can stroll around Europa-Park's Spanish themed area in the evenings (the rides only operate during regular park opening times).

General information Europa-Park hotels

Allergy sufferers

You suffer from an allergy and need hypoallergenic bedding? We will be happy to supply your booked room with appropriate bedding. At the hotel “Bell Rock“ all standard and comfort rooms are equipped with hypoallergenic bedding.

Check-in/-out

Europa-Park hotel guests receive their admission tickets at the various hotel receptions on the day of arrival. Rooms are available from 3.30 pm; check-out is 11 am on the day of departure. Every hotel has a luggage room.

Pets

Pets at the hotels are permitted for a charge of € 13.00/day upon prior registration. Pets are not allowed in the restaurant and wellness areas.

Visitor's tax

On behalf of the town of Rust, we are obliged to collect a visitor's tax of € 1.40 per adult/child from 12 years and per night!

Smoking/Non-smoking rooms

A family- and child-friendly hotel should be smoke-free. Therefore all hotel rooms at the Europa-Park hotels and the accommodation at the Camp Resort are non-smoking areas. Smoking is permitted outside the hotels and in the Bar “Spirit of St. Louis”, “Bar Colosseo”, in the panorama bar “Buena Vista Club” and in the bar “El Circo”.

Amenities & services at the hotels and Camp Resort

	"Bell Rock" themed hotel	"Santa Isabel" themed hotel	"Colosseo" themed hotel	"Castillo Alcazar" castle hotel	"El Andaluz" themed hotel	Camp Resort log-cabin	Camp Resort covered wagon	Camp Resort tepee tent	Camping camp site
DEHOGA hotel classification	4* ⁵	4* ⁵	4* ⁵	4*	4*				
Opening times									
Summer season	■	■	■	■	■	■	■	■	■
Winter season	■	■	■	■	■	■			■
Feel Good Weeks	■	■ ¹	■						
Room facilities									
Bathroom with bathtub ²	■	■	■	■	■				
Bathroom with shower	■	■	■	■	■				
Disabled-friendly rooms	■			■	■				
Rooms suitable for handicapped persons		■	■						
Bunk bed	■	■ ³	■	■	■	■	■		
Flat screen TV	■	■	■	■	■	■ ¹³			
Hairdryer	■	■	■	■	■				
Internet via Wi-Fi	■	■ ¹⁴	■ ¹⁴	■	■	■			
Air conditioning	■	■	■ ⁴	■ ⁴	■ ⁴	■ ¹³			
Minibar	■ ²	■ ²	■ ²	■ ²	■ ²	■ ¹³			
Non-smoking rooms	■	■	■	■	■	■	■	■	
Public sanitary facilities						■	■	■	■
Safe	■	■ ²	■ ²	■ ²	■ ²	■ ¹³			
Telephone	■	■	■	■	■				
Services									
24-h reception	■	■	■	■	■				
aquatic show/fountain show	■		■						
Lift	■	■	■	■	■				
Toilets for handicapped persons	■	■	■	■		■	■	■	■
Business centre	■	■	■		■				
Accessible on public transport	■	■	■	■	■	■	■	■	■
Hairdresser			■						
Cash point	■	■	■			■	■	■	■
Left luggage	■	■	■	■	■	■ ⁵	■ ⁵	■ ⁵	
Beverage-vending machine	■	■	■	■	■	■	■	■	■
Internet via Wi-Fi ⁶	■	■	■	■	■	■	■	■	■
Free parking	■	■	■	■	■	■	■	■	
Credit cards (Amex, Visa, MasterCard, Diners Club)	■	■	■	■	■	■	■	■	
Public children's toilet		■	■						
Public coin-operated telephone			■		■				
Quick check-out	■	■	■	■	■				
Wheelchair/pram rental	■	■	■	■	■	■ ⁷	■ ⁷	■ ⁷	■ ⁷
Safe at reception			■	■	■				
Shopping service ⁸	■	■	■	■ ⁹	■				
Shuttle services to railway station/airport ¹⁰	■	■	■	■	■				
SIXT car rental station			■						
VIP admission ½ hour earlier in summer, 1 hour earlier in winter ¹¹	■	■	■	■	■				

Amenities & services at the hotels and Camp Resort

	"Bell Rock" themed hotel	"Santa Isabel" themed hotel	"Colosseo" themed hotel	"Castillo Alcazar" castle hotel	"El Andaluz" themed hotel	Camp Resort log-cabin	Camp Resort covered wagon	Camp Resort tepee tent	Camping camp site
Launderette									■
Room service	■	■	■						
Leisure facilities / other facilities									
Sign-posted jogging track/ Nordic walking track	■	■	■	■	■	■	■	■	■
Bathing lake						■	■	■	■
Heated outdoor swimming pool				■	■				
Heated outdoor swimming pool with indoor access	■	■	■						
Fitness-club (from 16 years)	■	■	■	■	■				
Barbecue facilities						■	■	■	
Sauna and/or steam bath (from 18 years)	■	■	■	■	■				
Shop	■		■		■				
Solarium (from 18 years)	■		■	■	■				
Conference rooms	■	■	■	■	■				
Walking-stick rental	■	■	■	■	■				
Wellness & Spa area	■	■	■						
Extras for children									
Organised activities / children's disco ¹²	■	■	■	■	■				
Cots (subject to availability, for surcharge)	■	■	■	■	■				
Baby phone rental (for a deposit)	■	■	■	■	■				
Children's menus in restaurant	■	■	■	■	■	■	■	■	■
Children's corner	■		■		■				
Children's playground						■	■	■	■
Children's water playground			■	■					
Video play room	■		■						
Baby changing room or facility	■	■	■	■	■	■	■	■	■
Restaurants & Bars									
Fine-Dining-Restaurant	■								
A-la-carte restaurant	■		■		■	■	■	■	■
Buffet restaurant	■	■	■	■					
Hotel bar	■		■	■	■				
Snack bar / kiosk						■	■	■	■

1 "Santa Isabel" only at weekends and selected dates.

2 Only in suites (at the "Bell Rock" only in some) and in some comfort and deluxe rooms.

3 The bunk beds at "Santa Isabel" are not suitable for adults due to their size (90 x 175 cm)

4 Only in "Deluxe" rooms (except in the hotel "El Andaluz") and suites

5 Limited number of lockers

6 In the public areas

7 At Europa-Park's main entrance

8 When you shop at Europa-Park before 3 pm, we deliver your souvenirs directly to your reception

9 Collection at "El Andaluz" reception

10 For a fee; prior booking necessary. Prices at www.europapark.de/hotels/how-to-get-there

11 Some selected attractions at Europa-Park are open earlier

12 In the summer in the Spanish themed area, in the winter in the lobby "El Andaluz". Additionally at the Newport Dance Factory at the hotel "Bell Rock".

13 Only in "Winnetou's Honeymoon Suite"

14 Access Point for WLAN usage in the hotel room available at reception for a deposit.

Getting to Europa-Park:



By bus



and train



Arrival by bus or train:

Head for Ringsheim railway station which is just 4 km away from Europa-Park for your convenient travel.

This station is regarded as the official stop for Europa-Park. From there, you reach the main entrance of Europa-Park/the Europa-Park Hotels by bus (service 7231), which runs at regular intervals.

Coming from the north/south:

We recommend that you change at Freiburg im Breisgau or Offenburg and to take a regional train.

Take advantage of Deutsche Bahn's (DB) Europa-Park combined ticket, and arrive relaxed at Germany's biggest theme park by bus and rail. Your savings: the price for the Europa-Park combined ticket already contains two-way travel (2nd Class) on all local trains (IRE, RE, RB, S-Bahn suburban rail network) in Baden-Württemberg, the subsequent bus transfer to Europa-Park (Südbadenbus and SWEG) as well as admission to the park. The combined ticket is valid for up to 5 people.

Tickets are available from all DB ticket machines and from staffed ticket sales points. For further details on how to get to Europa-Park via bus or train, please visit www.europapark.de

Please be aware that there is a bus stop at the main entrance of Europa-Park as well as the Europa-Park Hotels.

If you are coming by plane, you can choose from various destination airports, all located in the immediate vicinity of Europa-Park:

Black Forest Airport Lahr:

(approx. 20 minute by car to get to Europa-Park)

Fly with your private jet to the airport in Lahr, which is located just 20 km from Europa-Park. Further information on www.airport-lahr.de

Airport Karlsruhe/Baden-Baden:

(approx. 1hr by car to get to Europa-Park)

Fly to Airport Karlsruhe/Baden-Baden, from where you can conveniently reach Europa-Park with the direct bus shuttle of "Zimmermann Reisen" Company.

To find out more and for booking information visit www.fly-baden.com or www.europapark.de/flight

EuroAirport Basel:

(approx. 1hr by car to get to Europa-Park)

Fly to the Euro Airport in Basel and drive to Europa-Park with the direct shuttle-bus of "Stiefvater Reisen". To find out more and for booking information visit www.fly-euroairport.com or www.europapark.de/flight

Aéroport International Strasbourg:

(approx. 45 minute by car to get to Europa-Park)

Fly to the Aéroport International Strasbourg and from there use the shuttle train to reach the main railway station in Strasbourg. From there, take the train to reach Offenburg railway station. Continue your journey by regional train to Ringsheim railway station and, by bus transfer, to Europa-Park (see "by bus and by train").

To find out more and for booking information visit www.strasbourg.aeroport.fr or www.europapark.de/flight

Stuttgart airport:

(approx. 1hr 40min by car to get to Europa-Park)

Fly to the airport in Stuttgart and drive to Europa-Park with the direct bus shuttle of "Zimmermann Reisen" or use public transport to reach Ringsheim railway station.

To find out more and for booking information visit www.flughafen-stuttgart.de or www.europapark.de/flight

Bodensee-Airport Friedrichshafen:

(approx. 2hr 30 min by car to get to Europa-Park)

Fly to Bodensee-Airport in Friedrichshafen and from there use public transport to reach Ringsheim railway station. Then take the bus to reach Europa-Park (see "by bus and by train"). To find out more and for booking information visit www.fly-away.de or www.europapark.de/flight

By plane



By car

Coming from the north:

Take the autobahn A5 toward Basel. Leave at Rust (57b) exit, and a feeder road will take you straight to Europa-Park

Coming from the south:

Take the autobahn A5 toward Karlsruhe/Frankfurt. Leave at Rust (57b) exit, and a feeder road will take you straight to Europa-Park.

SIXT car rental:

You arrive by plane or train and need a car to get around? Now you have the opportunity to rent one spontaneously at the SIXT car rental station (Guest Relations Desk) all-year-round at Europa-Park's hotel "Colosseo".

Europa-Park guests also have the option of turning in rented SIXT cars to the personnel in charge at the Europa-Park hotels.



Europa (-Park) -

your theme world is so close.

Germany:

Berlin	780 km
Düsseldorf	450 km
Frankfurt	240 km
Hamburg	720 km
Munich	380 km
Nuremberg	350 km
Regensburg	440 km
Saarbrücken	180 km
Stuttgart	170 km

UK:

London	820 km
--------	--------

France:

Dijon	300 km
Lyon	460 km
Marseille	760 km
Metz	220 km
Nancy	170 km
Paris	520 km
Reims	400 km
Strasbourg	45 km

Switzerland:

Basel	100 km
Bern	188 km
Geneva	340 km
Lausanne	290 km
Lugano	350 km
Lucerne	190 km
St. Gallen	210 km
Zurich	160 km

Netherlands:

Amsterdam	660 km
Eindhoven	530 km

Belgium:

Brussels	490 km
----------	--------

Luxembourg:

Luxembourg	270 km
------------	--------

Czech Republic:

Prague	630 km
--------	--------

Italy:

Bolzano	490 km
Milan	430 km
Rome	1020 km

Austria:

Innsbruck	410 km
Salzburg	530 km
Vienna	800 km



E★MOTIONS Europa-Park gift card

Bring pleasure to others and give them unforgettable moments at the fascinating world of Europa-Park.

- Pure fun and enjoyment at the park
- Fabulous accommodation
- Relaxing wellness & spa options
- Fascinating evening events
- Exciting events and TV productions
- Range of culinary options in the park and hotels
- and much more



Advantages for you:

- ★ Non-cash payment
- ★ Flexible amount
- ★ Multiple use
- ★ Transferable

NEW!

- Online credit status information
- Protected against loss and theft through online registration

Select design and add funds!
www.europapark.de/shop

School holidays calendar 2013/2014

	Easter/Spring	Whitsun	Summer	Autumn	Winter
Germany					
Baden-Württemberg	25.03. – 05.04.	21.05. – 01.06.	25.07. – 07.09.	28.10. – 30.10.	23.12. – 04.01.14
Bavaria	25.03. – 06.04.	21.05. – 31.05.	31.07. – 11.09.	28.10. – 01.11.	23.12. – 04.01.14
Hesse	25.03. – 06.04.		08.07. – 16.08.	14.10. – 26.10.	23.12. – 11.01.14
North Rhine Westph.	25.03. – 06.04.	21.05.	22.07. – 03.09.	21.10. – 02.11.	23.12. – 07.01.14
Rhineland-Palat.	20.03. – 05.04.	10.05. / 31.05.	08.07. – 16.08.	04.10. – 18.10.	23.12. – 07.01.14
Saarland	25.03. – 06.04.		08.07. – 17.08.	21.10. – 02.11.	20.12. – 04.01.14
France					
Zone A	21.04. – 05.05.		07.07. – 02.09.	20.10. – 03.11.	22.12. – 05.01.14
Zone B	14.04. – 28.04.		07.07. – 02.09.	20.10. – 03.11.	22.12. – 05.01.14
Zone C	28.04. – 12.05.		07.07. – 02.09.	20.10. – 03.11.	22.12. – 05.01.14
Switzerland					
Basel	23.03. – 07.04.		29.06. – 11.08.	28.09. – 13.10.	21.12. – 05.01.14
Berne	06.04. – 21.04.		06.07. – 19.08.	21.09. – 13.10.	21.12. – 05.01.14
Geneva	28.03. – 07.04.		29.06. – 25.08.	19.10. – 27.10.	21.12. – 05.01.14
Lucerne	29.03. – 14.04.		06.07. – 18.08.	28.09. – 13.10.	21.12. – 05.01.14
St. Gallen	07.04. – 21.04.		07.07. – 11.08.	29.09. – 20.10.	21.12. – 05.01.14
Zurich	28.03. – 14.04.		06.07. – 27.08.	12.10. – 27.10.	21.12. – 05.01.14
Waadt	22.04. – 04.05.		15.07. – 17.08.	07.10. – 19.10.	23.12. – 04.01.14
Austria					
Vorarlberg	23.03. – 02.04.	18.05. – 21.05.	06.07. – 07.09.		23.12. – 06.01.14
Tirol	23.03. – 02.04.	18.05. – 21.05.	06.07. – 07.09.		23.12. – 06.01.14
Lower Austria	23.03. – 02.04.	18.05. – 21.05.	29.06. – 31.08.		23.12. – 06.01.14
Vienna	23.03. – 02.04.	18.05. – 21.05.	29.06. – 31.08.		23.12. – 06.01.14
Netherlands					
North	16.02. – 24.02.	27.04. – 05.05.	06.07. – 18.08.	19.10. – 27.10.	21.12. – 05.01.14
Middle	16.02. – 24.02.	27.04. – 05.05.	20.07. – 01.09.	19.10. – 27.10.	21.12. – 05.01.14
South	23.02. – 03.03.	27.04. – 05.05.	29.06. – 11.08.	12.10. – 20.10.	21.12. – 05.01.14
GB					
	29.03. – 14.04.	27.05. – 31.05.	24.07. – 01.09.	28.10. – 01.11.	No indication
Belgium					
	30.03. – 14.04.	18.05. – 20.05.	01.07. – 31.08.	26.10. – 03.11.	23.12. – 05.01.14
Luxembourg					
	23.03. – 07.04.	25.05. – 02.06.	16.07. – 15.09.	26.10. – 03.11.	21.12. – 05.01.14
Italy					
	28.03. – 03.04.		09.06. – 31.08.		21.12. – 05.01.14

Public Holidays 2013/2014

	D	CH	F	A	LUX	I	NL	BE	GB
March									
SU 24	Palm Sunday	x	x		x				
FR 29	Good Friday	x	x	x	x				x
SU 31	Easter Sunday	x	x	x	x	x	x	x	x
April									
MO 01	Easter Monday	x	x	x	x	x	x	x	x
TH 25	Liberation Day (I)					x			
TU 30	Queen's Day (NL)						x		
May									
WE 01	Labour Day	x	x	x	x	x		x	
SU 05	Liberation Day (NL)						x		
MO 06	Early May (GB)								x
WE 08	Liberation Day			x					
TH 09	Ascension Day / Father's Day	x	x	x	x	x	x	x	
SU 12	Mother's Day	x	x		x		x	x	
SU 19	Whitsunday	x	x	x	x		x	x	
MO 20	Whitmonday	x	x	x	x		x	x	
SU 26	Mother's Day (F)			x					
MO 27	Spring bank holiday								x
TH 30	Corpus Christi	x	x		x				
June									
SU 02	Republic Day (I)						x		
SU 02	Father's Day (CH)		x						
SU 09	Father's Day (A/BE)				x			x	
SU 09	Mother's Day (LUX)				x				
SU 16	Father's Day (NL/F)			x			x		
SU 23	National Holiday (LUX)				x				
July									
SU 14	National Holiday (F)			x					
SU 21	National Holiday (BE)							x	
August									
TH 01	National Holiday (CH)		x						
TH 15	Assumption	x	x	x	x	x		x	
MO 26	Summer Bank Holiday (GB)								x
September									
MO 09	Knabenschiessen		x						
SU 15	Federal Fast (CH)		x						
October									
TH 03	German Unification Day	x							
SU 06	Harvest Festival/Father's Day (LUX)	x			x				
SA 26	National Holiday (A)				x				
November									
FR 01	All Saints	x	x	x	x			x	
MO 11	Armistice Day			x				x	
SU 24	Remembrance Day (DE)	x	x						
December									
SU 01	1 st Sunday of Advent	x	x	x	x	x	x		x
SU 08	3 rd Sunday of Advent	x	x	x	x	x	x		x
SU 15	3 rd Sunday of Advent	x	x	x	x	x	x		x
SU 22	4 th Sunday of Advent	x	x	x	x	x	x		x
WE 25	Christmas	x	x	x	x	x	x	x	x
TH 26	St Stephen's Day	x	x	x	x	x	x	x	x
TU 31	New Year's Eve	x	x	x	x	x	x	x	x
January 2014									
WE 01	New Year's Day	x	x	x	x	x	x	x	x
TU 02	St. Berchtold's Day (CH)		x						
MO 06	Epiphany	x			x		x		x

Whatever your dreams may be,

they will come true at Europa-Park.

Book your adventure today!



EUROPA PARK®

THEME PARK & RESORT

www.europapark.de

